

School Employees Benefits Board (SEBB) Program- Children Under Age 19

SUMMARY OF BENEFITS

VISION CARE SERVICES	IN-NETWORK MEMBER COST	OUT-OF-NETWORK MEMBER REIMBURSEMENT
EXAM SERVICES		
Exam	\$0 copay	Up to \$90
Retinal Imaging	Up to \$39	Not covered
CONTACT LENS FIT AND FOLLOW-UP		
Fit and Follow-up – Standard	\$0 copay; paid in full fit and two follow-up visits	Up to \$65
Fit and Follow-up – Premium	\$0 copay; 10% off balance over \$65 allowance	Up to \$65
FRAME		
Frame	\$0 copay; 20% off balance over \$150 allowance	Up to \$75
STANDARD PLASTIC LENSES		
Single Vision	\$0 copay	Up to \$25
Bifocal	\$0 copay	Up to \$35
Trifocal	\$0 copay	Up to \$53
Lenticular	\$0 copay	Up to \$53
Progressive – Standard	\$0 copay	Up to \$40
Progressive – Premium Tier 1	\$85 copay	Up to \$40
Progressive – Premium Tier 2	\$95 copay	Up to \$40
Progressive – Premium Tier 3	\$110 copay	Up to \$40
Progressive – Premium Tier 4	\$175 copay	Up to \$40
LENS OPTIONS		
Anti Reflective Coating – Standard	\$45	Not covered
Anti Reflective Coating – Premium Tier 1	\$57	Not covered
Anti Reflective Coating – Premium Tier 2	\$68	Not covered
Anti Reflective Coating – Premium Tier 3	\$85	Not covered
Photochromic – Non-Glass	\$75	Not covered
Polycarbonate – Standard	\$0 copay	Up to \$20
Scratch Coating – Standard Plastic	\$0 copay	Up to \$8
Tint – Solid or Gradient	\$15	Not covered
UV Treatment	\$15	Not covered
High Index	\$0 copay	Up to \$60
All Other Lens Options	20% off retail price	Not covered
CONTACT LENSES		
Contacts – Extended Wear Disposable	No cost for annual supply of up to \$300	50% of charge up to \$300
Contact – Daily Wear Disposable	No cost for annual supply of up to \$300	50% of charge up to \$300
Contacts – Conventional	No cost for annual supply of up to \$300	50% of charge up to \$300
Contacts – Medically Necessary	No cost for annual supply of up to \$300	50% of charge up to \$300
OTHER (Plan allows member to receive either contacts and frame, or frames and lens services)		
LASIK or PRK from U.S. Laser Network	15% off retail or 5% off promo price; call 1.800.988.4221	Not covered
FREQUENCY		
Exam	Once every 12 months, benefits reset on 1/1	
Frame	Once every 12 months, benefits reset on 1/1	
Lenses	Once every 12 months, benefits reset on 1/1	
Contact Lenses	Once every 12 months, benefits reset on 1/1	



40% OFF

additional complete pair of prescription eyeglasses

20% OFF

non-covered items, including non-prescription sunglasses

Find an eye doctor
(Access Network)

- eyemed.com
- EyeMed Members App
- For LASIK, call 1.800.988.4221

Heads up

You may have additional benefits.

Log into

eyemed.com/member to see all plans included with your benefits.

Ready to live your best EyeMed life?

There's so much more to your vision benefits than copays and coverage. Get ready to see the good stuff for yourself.

Your network is the place to start

See who you want, when you want. You have thousands of providers to choose from – independent eye doctors, your favorite retail stores, even online options.

Keep your eyes open for extra discounts

Members already save an average 71% off retail using their EyeMed benefits,¹ but our long list of special offers takes benefits even further.

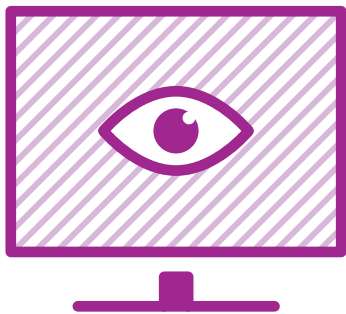
Remember, you're never alone

We're always here to help you use your benefits like a pro. Stay in-the-know with text alerts or healthy vision resources from the experts. If it can make benefits easier for you, we do it.

¹Based on weighted average of sample transactions; EyeMed Insight network/\$10 exam copay/\$10 materials copay/\$120 frame or contact lens allowance.



eye
Med



Create a member account at eyemed.com

Everything is right there in one spot. Check claims and benefits, see special offers and find an eye doctor – search for one with the hours, location and brands you want. For maximum mobility, try the EyeMed Members App (Google Play or App Store).

INDEPENDENT
PROVIDER
NETWORK



LENSCRAFTERS

PEARLE
EST. 1961
VISION

OPTICAL